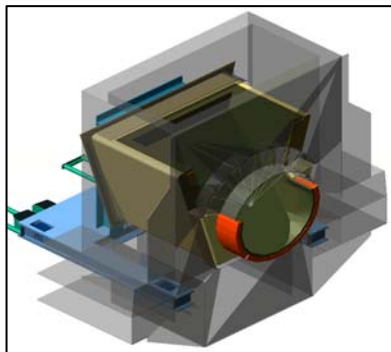




CAPABILITY STATEMENT



Who we are

Pacer Engineers is a young, dynamic and highly skilled engineering company focused on providing excellent value to clients in the delivery of resource projects.

Our vision is to develop a world-class engineering company that provides our clients a full range of engineering services to successfully take their projects from the conceptual stage through to execution and operation. We achieve this by working closely with our clients in a responsive and flexible way, all the time providing value.

We believe in linking our business success to the success of our clients. We will always respond to feedback from our clients and are always looking for ways to improve all aspects of our business.



PACER'S VALUES are the key drivers to successful delivery of our projects:

- **Leadership:** Strong and effective leadership is an absolute key in how we deliver our projects.
- **Teamwork:** Our teams succeed by working together closely with client teams and others forming an integrated team.
- **Efficiency:** We use resources to the best advantage to our clients. Efficiency means planning the best way of achieving the desired result and then delivering to this plan.
- **Innovation:** We look beyond the obvious for solutions that may better meet the needs of our clients.
- **Continual Improvement:** We examine our projects and other projects to identify good performance and to determine if there would have been better ways to improve performance further. We welcome feedback from our clients and are always looking for ways to improve all aspects of our business. Our principles are woven into all facets of our work.
- **Safety and Quality:** Safety is the first thing we think about, be it in design or how we intend to construct. A safe worksite is an efficient worksite. Similarly, delivering a quality product ensures our clients have the opportunity to maximise the return on their investments.

Our beginnings

Pacer is an owner-managed and run company born out of the Western Australian mining industry based in Bunbury in Western Australia's South West coastal region with offices in Perth.

Pacer has been providing a wide range of consulting and contracting services to the local and regional areas for years and, over this time, has gained an enviable reputation as an efficient deliverer of engineering projects and technical support to a core of valuable clients.



**Pacer office
Victoria St,
Bunbury WA**



The owners of Pacer hold key positions in the business and, supported by Pacer's other highly skilled and experienced personnel, clients can be assured their project receives the utmost commitment, care and attention.

Over time, Pacer has established reliable relationships and gained valuable experience working with other engineering and construction firms and contractors that complement Pacer's capabilities that can be drawn upon as and when required to suit a client's requirements.

Our Services

At Pacer, we can provide a complete team of personnel to engineer and construct projects, provide engineering consulting advice or provide an experienced individual to supplement a client's team.

Via an EPC (design and construct) or EPCM (cost reimbursable) delivery model, Pacer is able to offer a range of services which allows clients the opportunity to select the optimum delivery model for their project.

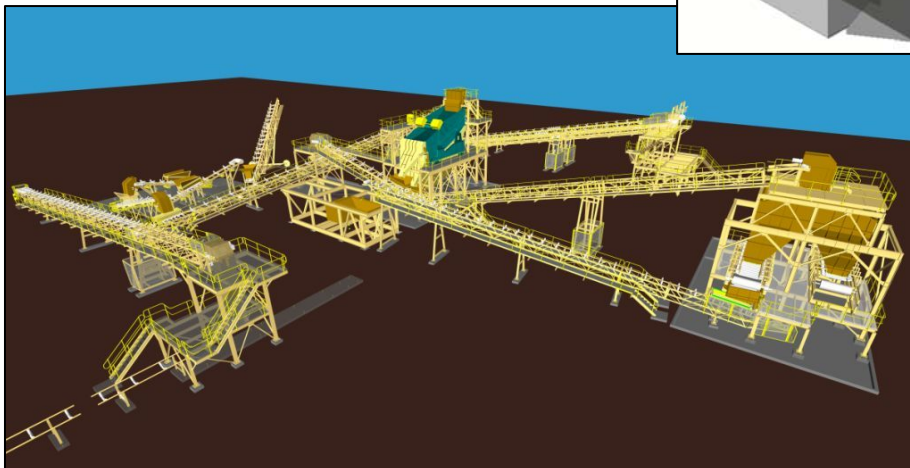
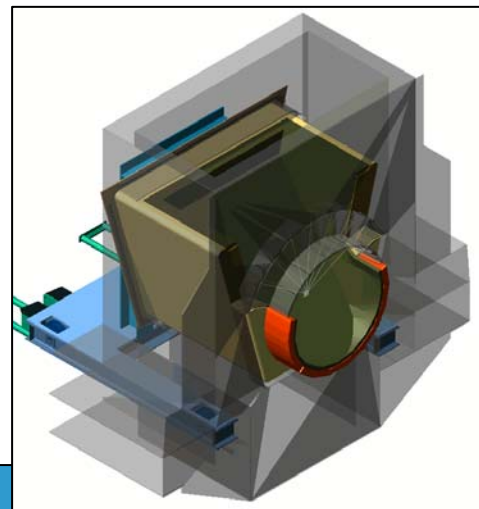
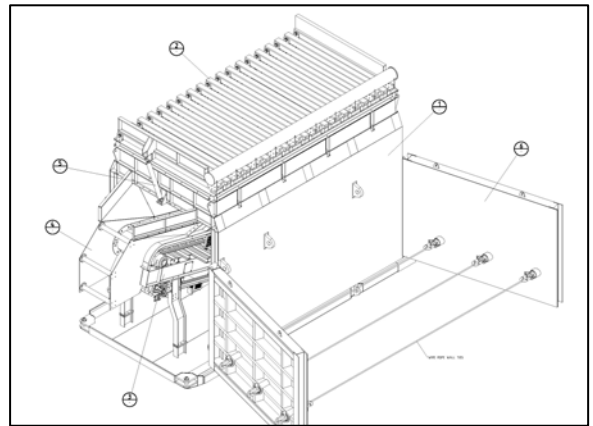
Pacer can provide the following services:

Front End Engineering

- Conceptual process design including metallurgical testwork supervision
- Conceptual engineering design & drafting
- Project scoping and definition
- Cost estimating & scheduling
- Project development and management

Engineering design

- Engineering design & detailed drafting (mechanical, structural, civil & electrical)
- Process Flow Diagrams
- Piping & Instrumentation Diagrams
- Shop drafting



Project execution

- Project Management
- Project Execution Plans & delivery models
- Expediting & logistics services
- Site construction services
- Construction management & supervision
- Commissioning of plant & equipment

Procurement

- Sourcing and procurement of new and used plant, equipment & components
- Refurbishment and installation of new and used plant & equipment
- QA, verification, inspection & signoff

Studies

- Scoping studies
- Pre-feasibility studies
- Feasibility and Bankable studies

Audits & reviews

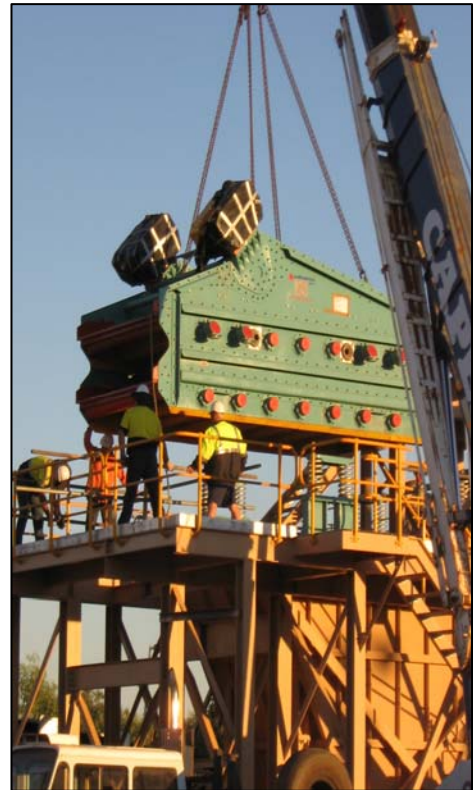
- Design reviews for compliance with Australian and industry standards
- Classified Plant audits, compliance & rectification works
- Plant evaluation and condition reports

Engineering secondments

- Provision of technical personnel to clients on secondment basis

Operational support

- Engineering advice and technical assistance for operational and maintenance issues
- Reliability Engineering
- Condition monitoring, vibration analysis, & thermography
- Trouble shooting & de-bottlenecking
- Plant optimisation
- Shutdown management, planning & execution



Our experience

Pacer has accumulated extensive experience and expertise in the following areas:

- Brownfields mineral processing plant upgrades
- Greenfields site infrastructure and processing facility installations
- Crushing & screening plant design
- Dense media separation circuit design
- Water & waste water treatment
- Remote area infrastructure
- Borefield and water supply systems
- Slurry & water pumping systems and distribution networks
- Power generation and distribution systems
- Plant relocations
- Plant refurbishment
- Plant relocations

Pacer's experience in providing the above services extends across the following industry areas:

- Mineral sands
- Gold
- Diamonds
- Iron Ore
- Manganese
- Ports
- Water supply & treatment

Pacer is especially experienced in the **Mineral Sands** industry. Key personnel have spent many years directly employed by mineral sands mining companies and, through this, Pacer has established a strong relationship with mineral sands miners such as Iluka Resources.

Pacer has carried out 125 projects of varying size and complexity for Iluka Resources in the South West, Mid West and South Australia. These include sustaining capital projects, mine relocations, maintenance and reliability projects, studies, and investigations. Minesite projects for Iluka include the in-pit mining units, screening & scrubbing plant, spiral concentrators, process water systems, and slurry pumping systems. Pacer's Iluka projects also include projects in the dry separation mills, synthetic rutile plants, and all of the associated materials handling plant.

Pacer has also contracted to other mineral sands clients such as Doral Mineral Sands, Bemax Resources (formerly Cable Sands), Matilda Minerals & Murray Basin Titanium.

Recent projects

The following list some of the more significant projects that Pacer has recently completed or is currently executing:

- Doral Mineral Sands Burekup mine development
- Iluka MU10 mining unit design & construct
- Iluka Resources SR2 Char Loadout Upgrade
- Iluka Resources Capel Dry Plant OH&S Review
- Iluka Resources Waroona mine rectification works
- Iluka cooler arch modelling
- Iluka zircon screening upgrade
- OM Manganese Primary Grizzly replacement
- OM Manganese DMS drain / rinse screens replacements
- Pilbara Iron Brockman2 Pilot Plant
- Griffin Coal Bluewaters Coal Loadout Conveyor system
- Kimberly Diamonds Ellendale E9 Dense Media Plant Upgrade
- Kimberly Diamonds Ellendale E9 450tph Plant Capacity Upgrade
- OM Manganese Bootu Creek Plant Rectification Project
- OM Manganese Bootu Creek Rejects Re-Processing Plant
- Carpentaria Gold Leach & Adsorption Circuit upgrade
- Atlas Iron Ore Port Hedland Shiploading Investigation
- Bunbury Port Authority Berth 8 Shiploader capacity investigation
- Matilda Minerals Site Operation Review
- Heron Resources Jump-up Dam Acid Storage Facility

Members of the Pacer team have recently been seconded to the following projects:

- HWE BHPB Yandi Area C Upgrade
- Koolyanobbing Iron Ore Capacity Upgrade
- Worsley Alumina operations

Contact Us

Please feel free to contact us for further information.

Office address:

Pacer Engineers
Level 1 / 53 Victoria St,
Bunbury, Western Australia 6230

Postal address:

PO Box 1236
Bunbury, Western Australia 6231

Phone: +61 8 97214995
Fax: +61 8 97214993
Email: inquiries@pacerengineers.com.au
Website: www.pacerengineers.com.au

David Teasdale
Managing Director
0419195278

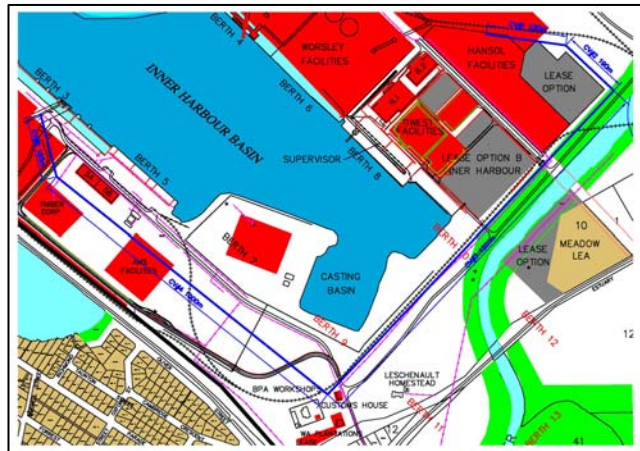
Case Study

Port Woodchips Conveyor System

Pacer was engaged by **The Bunbury Port Authority** to carry out conceptual design and costing for a conveyor system to transfer woodchips from the northern side of the Inner Harbour to the Southern Side.

The project involved examination of existing materials handling systems, and conceptual engineering design of a suitable conveyor system to convey the product a distance of 2.5km. Project costing was carried out to +/-30% accuracy.

Project value \$60K



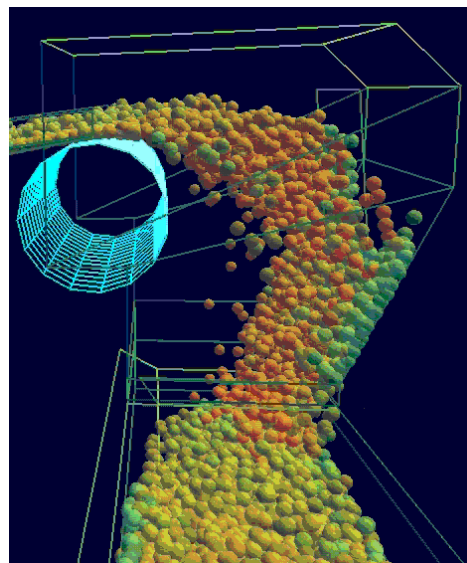
Case Study

Port Berth Loading Rate Capacity Upgrade

Pacer was engaged by **The Bunbury Port Authority** to investigate the loading capacity of the system for the four existing cargoes. The investigation also examined the ultimate possible loading rates for the future 7 cargoes, and included engineering improvements to maximise ship loading rates for all 7 cargoes.

Pacer utilised specialist chute modelling software as a means of predicting flows through transfer chutes before and after modifications.

Project value \$50K



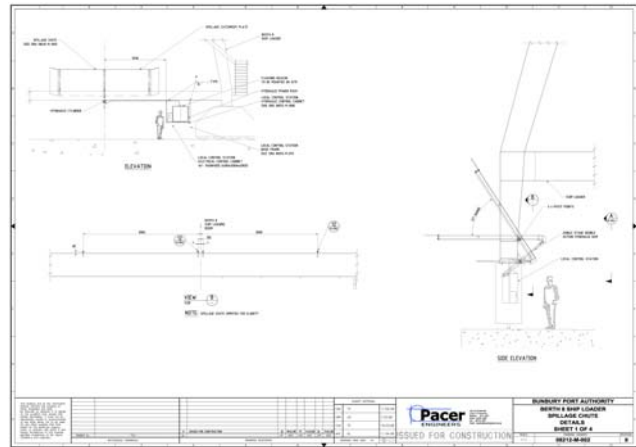
Case Study

Port Shiploader Spillage Containment

Pacer was commissioned by **The Bunbury Port Authority** to design a spillage catchment chute to contain incidental spillage of mineral.

The chute was hydraulically operated and Pacer was responsible for the complete engineering design. The chute is currently in use.

Project value \$25K



Case Study

Mine Engineering & Operation Review

Pacer was commissioned by **Matilda Minerals** to carry out a review of their Andranangoo mineral sands mining operation on the Tiwi Islands in the Northern Territory.

The project involved examination of existing mining methods, processing plant & equipment, and water and slurry pumping systems, and providing potential improvements to the operation.

A report was produced detailing numerous potential cost savings and operating efficiency improvements.

Project value \$15K



Case Study

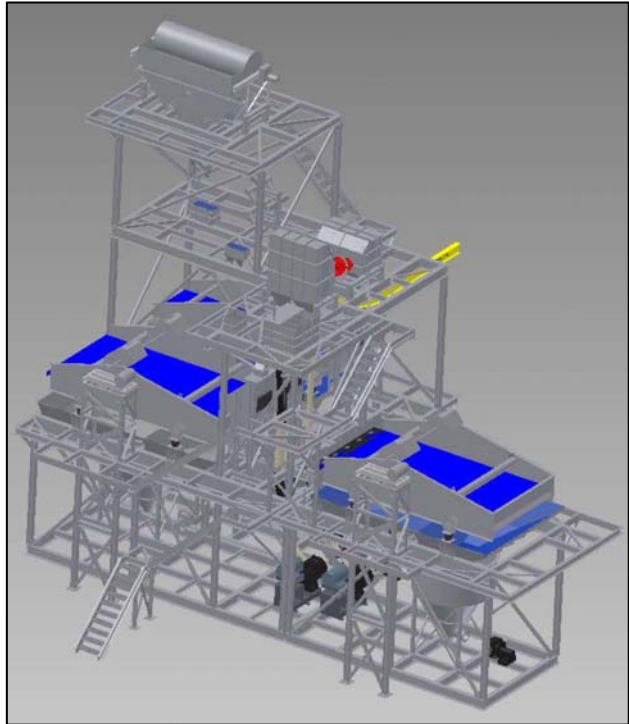
Crushing / Screening & Dense Media Separation Plant

Pacer is currently engaged by **OM Manganese** to design & construct a new crushing / screening & dense media circuit at the Bootu Creek Manganese mine in the northern territory.

This new plant will re-process the rejects stream from the existing processing plant, producing a low grade Manganese product.

The project involves engineering design from conceptual modelling through to fabrication shop drawings. Pacer is also supplying all fabrication and materials, and is responsible for all site construction activities.

Project value \$13 M



Case Study

Crushing / Screening Plant Rectification Works

Pacer was commissioned by **OM Manganese** to carry out the necessary mechanical, structural, civil, and electrical engineering design for rectification works at the Bootu Creek Manganese mine in the northern territory.

The rectification works were to replace a fine ore reclaim stockpile system with a surge bin and stacking conveyor.

The project involved engineering design from conceptual modelling through to fabrication shop drawings. Pacer also supplied all fabricated items, and managed the site construction activities.

Project value \$5 M

